

**Delivering Cures For Blood Cancers**

For patients with blood cancers like leukemia and lymphoma, and other life-threatening diseases, a cure exists.

We are a community of donors, volunteers, health care professionals and researchers who deliver cures by helping patients get the life-saving marrow or cord blood transplant they need. Our passion to save lives drives us to help more patients survive each year.

**Patients Depend On Us**

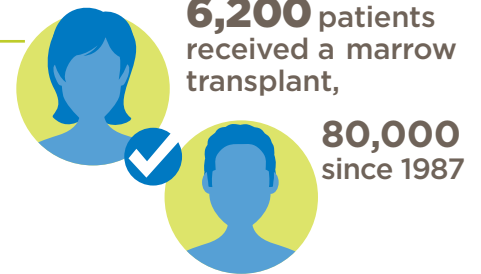
- Every three minutes someone is diagnosed with a blood cancer.
- 70 percent of patients do not have a fully matched donor in their family. They depend on Be The Match<sup>®</sup>.
- Every dollar we raise helps more patients afford transplant, adds potential marrow donors to the registry and funds our life-saving research.

**BE THE MATCH IS THE WORLD'S LEADING NONPROFIT ORGANIZATION FOCUSED ON SAVING LIVES THROUGH MARROW AND UMBILICAL CORD BLOOD TRANSPLANTATION**

**Transplants**

We facilitated nearly 6,200 marrow and umbilical cord blood transplants in 2016, for a total of 80,000 transplants since 1987.

We continually strive to improve access to transplant, to remove barriers to treatment and strengthen our ability to help more patients live longer, healthier lives.



**Patient Support**

We provide one-on-one support to patients and their families. We offer the resources and guidance they need before, during and after transplant.

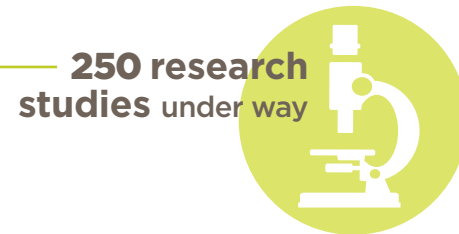
We provide patient assistance. Nearly \$3.3 million was provided in 2016 to more than 1,800 patients to help ease the financial burden of uninsured costs associated with treatment.



**Research and Education**

We conduct research that has already saved and improved lives. In 2016, more than 250 research studies were underway through our research program, CIBMTR<sup>®</sup>. These studies continue to help more patients get the transplant they need and improve transplant outcomes.

We provide comprehensive information, research and resources for health care professionals, which helps them provide optimal care for their patients before, during and after transplant.



**Engaging the Public**

We enlist the support of thousands of individuals whose compassion and generosity help save lives.

We grow and manage the world's largest and most diverse registry. In 2016, we added 472,000 new registry members. We have 16 million registry members and 238,000 umbilical cord blood units on the Be The Match Registry<sup>®</sup>, and access to 29 million potential donors and 712,000 umbilical cord blood units worldwide.

In 2016, 33,000 contributors gave more than \$6.2 million, and volunteers donated over 117,000 hours—a value of nearly \$3 million.

